

**Request for Bids for the
Morse Road Transfer Station Improvements Project**

Posted: March 28, 2025

This Addendum No. 2 shall be considered part of the RFB for the Morse Road Transfer Station Improvement Project and is intended to correct, change, and/or add to the documents as described below. Please make sure to complete the Addenda Acknowledgement form included in the *Required Documents*.

Attached are the revised IFC drawings and Bid Sheet to address the requested changes below:

- A. Drawing ST01-0004, Detail 1 – add 2 notes
 - 1) Contractor to assume 2” of aggregate base will need to be added as part of surface preparation to repair any surface damaged by demolition and brought to grade.
 - 2) Install 10-MIL vapor retarder. Edges to overlap 6” and be sealed.
- B. Add note to C200 Site Plan to clean out detention pond just prior to completion. See below for bid schedule note.
- C. Add note to drawing EL01-5000 Note 6 – Installation must adhere to AEP requirements.
- D. Bid Schedule updates
 - Add line item to have contractor clean out detention pond just prior construction completion. We will need to discuss how to word this scope of work.



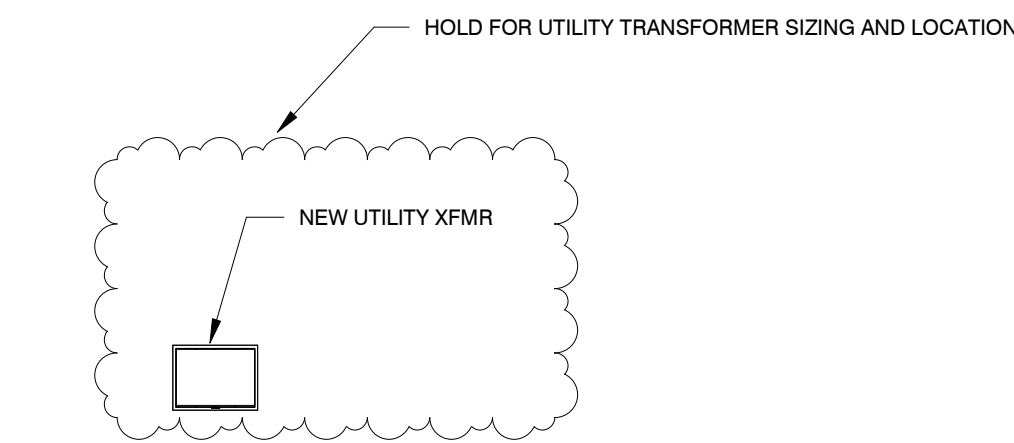
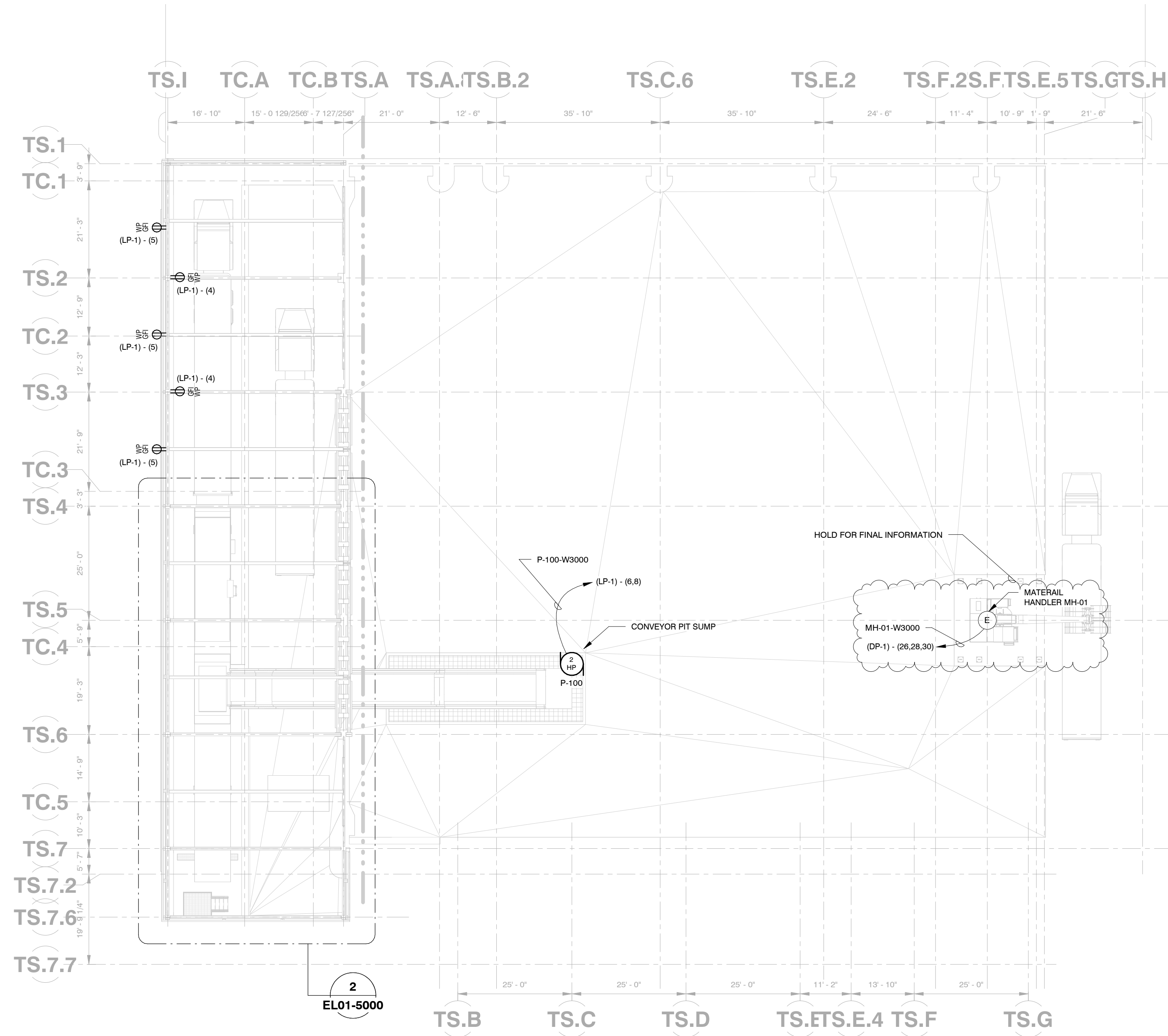
Attachments

- 1) Revised Drawings
- 2) Revised Bid Sheet

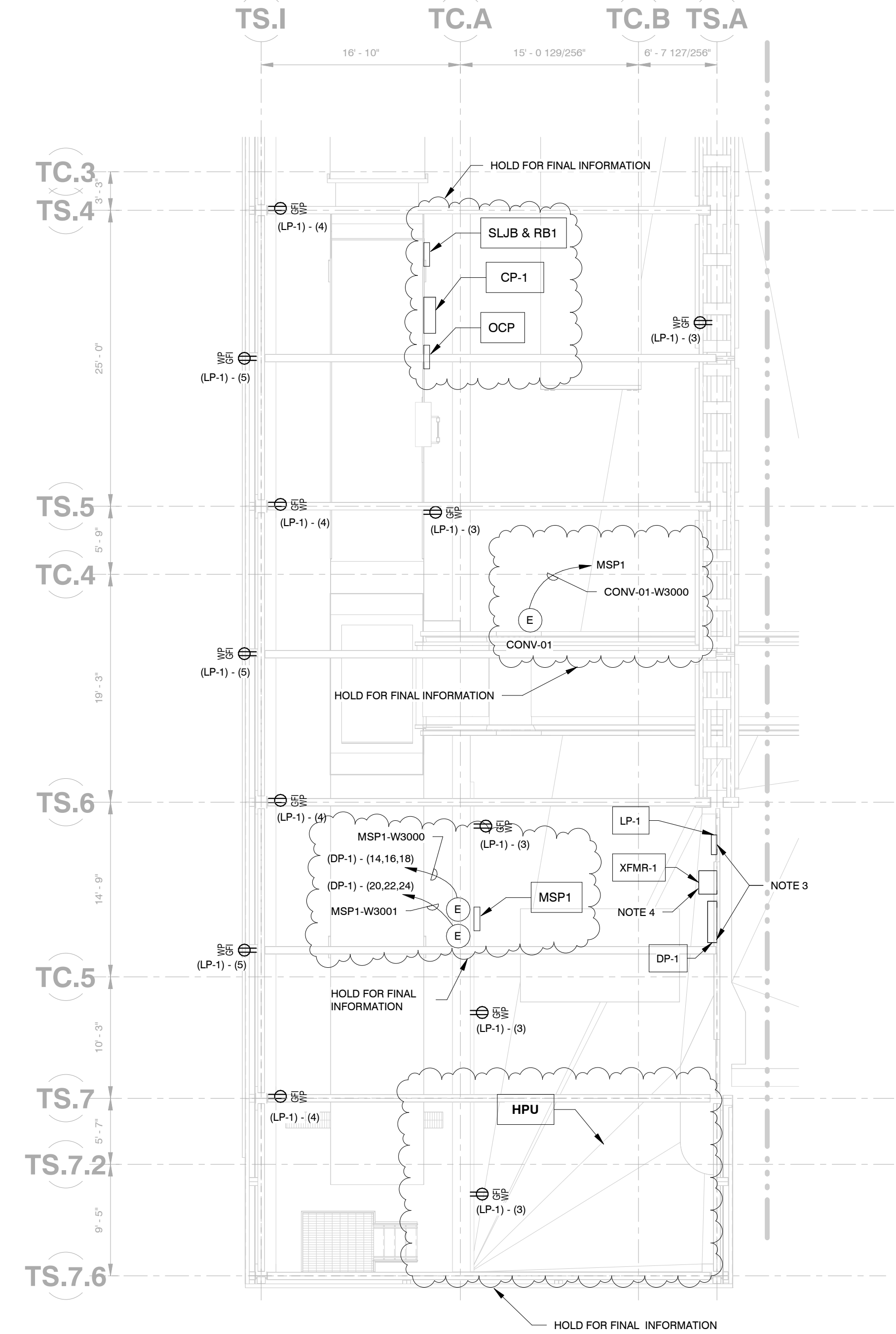
The deadline for questions relating to this RFB is 4:00 p.m., April 4, 2025.

Bids are due no later than 1:30 p.m., April 11, 2025

++ This completes Addendum No. 2 ++



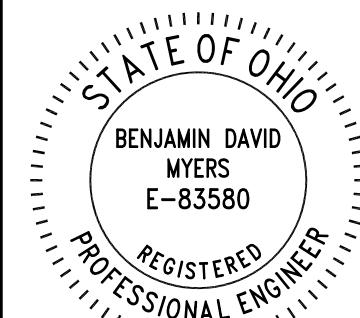
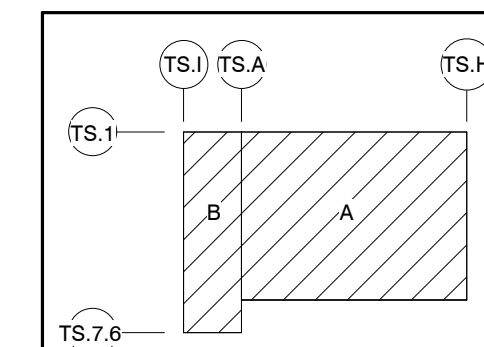
PLAN
1/16" = 1'-0"



2 ENLARGED VIEW
EL01-5000 1/8" = 1'-0"

NOTES:

- FOR POWER DISTRIBUTION LEGEND, NOTES & DETAILS SEE DRAWING EL00-5000 & EL00-5001.
- WORK THIS DRAWING WITH CONDUIT AND CABLE SCHEDULE AND COMPACTOR WIRING SCHEMATICS.
- FOR PANEL SCHEDULE SEE DRAWING EL01-5001.
- 25kVA, 480V-120/240V, 1 PHASE TRANSFORMER. USE SQUARE D PART # EE25S3HF OR OWNER APPROVED EQUIVALENT.
- EXISTING SECURITY CAMEARS SHALL BE PROTECTED AND SALVAGED DURING DEMOLITION.
- INSTALLATION MUST ADHERE TO AEP REQUIREMENTS.



REVISION RECORD	
NO	DATE
0	03 MAR 2025
1	26 MAR 2025

Civil & Environmental Consultants, Inc.
250 W. Old Wilson Bridge Road • Suite 250 • Worthington, OH 43085
614-540-6633 • 888-595-6808
www.ccecinc.com

SOLID WASTE AUTHORITY OF CENTRAL OHIO
MORSE ROAD TRANSFER STATION
4260 MORSE ROAD
CITY OF COLUMBUS, OHIO 43230

ELECTRICAL OVERALL SITE POWER DISTRIBUTION PLAN	
DATE: NOV 2021	DRAWN BY: J. GIACCHINO
AS SHOWN	CHECKED BY: E. HULLINGS
PROJECT NO: 313-408	APPROVED BY: B. MYERS
DRAWING NO: EL01-5000	
SHEET 86 OF 88	

GENERAL

- 1. THE CONTRACT STRUCTURAL DRAWINGS AND SPECIFICATIONS REPRESENT THE FINISHED STRUCTURE. THEY DO NOT INDICATE THE METHOD OF CONSTRUCTION...
2. THE CONTRACTOR IS RESPONSIBLE FOR SAFETY PRECAUTIONS AND PROGRAMS IN CONNECTION WITH THE WORK THAT CONFORMS WITH THE REGULATIONS OF THE OCCUPATIONAL SAFETY AND HEALTH ADMINISTRATION (OSHA) SAFETY AND HEALTH STANDARDS FOR THE CONSTRUCTION INDUSTRY.

DEMOLITION:

- 1. DEMOLITION OF EXISTING STRUCTURES TO BE REMOVED SHALL BE PERFORMED BY THE CONTRACTOR USING MEANS NECESSARY TO PREVENT DAMAGE TO THE EXISTING STRUCTURES TO REMAIN...
2. CONTRACTOR TO ASSUME 2" OF AGGREGATE BASE WILL NEED TO BE ADDED AS PART OF SURFACE PREPARATION TO REPAIR ANY SURFACE DAMAGED BY DEMOLITION AND BROUGHT TO GRADE.

SHOP DRAWINGS:

- 1. THE GENERAL CONTRACTOR WILL REVIEW AND STAMP ALL SHOP DRAWINGS AND PRODUCT DATA FOR CONFORMANCE WITH THE CONSTRUCTION DOCUMENTS PRIOR TO SUBMISSION...
2. ANY SHOP DRAWINGS CHECKED AND INITIALED BY THE SUPPLIER/DETAILER PRIOR TO SUBMITTING FOR ARCHITECTURAL AND ENGINEERING REVIEW, WILL BE RETURNED WITHOUT REVIEW.

EXISTING DRAWINGS:

- 1. INFORMATION SHOWN Addendum No 1_02 MRTS Construction Docs (2011-12-12).

CODES AND STANDARDS:

Table with 2 columns: Code/Standard and Description. Includes IBC 2021, ASCE 7, AISC 360, AISC 341, AWS D1.1, AWS D1.4, AISC DESIGN GUIDE 7, AISC TECH REPORT 13, ACI 117, ACI 301, ACI 302, ACI 318, ACI 347, ACI 350, ACI 530/530.1, ASTM A185, ASTM A615, ASTM A706, ASTM C150, ASTM D1751, ASTM D1752, OSHA, SP-66.

DESIGN LOADS:

- 1. ROOF: A. LIVE LOAD: 20 PSF (REDUCIBLE); B. DEAD LOAD: 20 PSF (INCLUDES FLOOR DECK MEP, LIGHTS, FRAMING SELF-WEIGHT AND COLLATERAL LOAD)
2. FLOOR AT GRADE: A. LIVE LOAD: 500 PSF; B. DEAD LOAD: N/A; C. CONCENTRATED FLOOR LIVE LOAD: 2,000 LBS; 3. STAIR LIVE LOAD: 100 PSF
4. WIND LOADS: A. BASIC WIND SPEED (3-SECOND GUST): 115 MILES PER HOUR; B. EXPOSURE: C; C. RISK CATEGORY: II; D. BUILDING CLASSIFICATION: PARTIALLY ENCLOSED; E. INTERNAL PRESSURE COEFFICIENT: +/- 0.18
5. GROUND SNOW LOAD: 20 PSF
6. SEISMIC LOADS: A. SEISMIC IMPORTANCE FACTOR: 1.0; B. RISK CATEGORY: D; C. SITE CLASS: II; D. SEISMIC DESIGN CATEGORY: B; E. RESISTING SYSTEM: NOT SPECIFICALLY DETAILED FOR SEISMIC RESISTANCE

FOUNDATIONS:

- 1. GEOTECHNICAL INFORMATION (SUPPLIED BY OWNER): A. PREPARER: CEC; B. REPORT NUMBER: M - 313-408 - SUMMARY OF GEOTECHNICAL RECOMMENDATIONS AND DESIGN PARAMETERS MEMO T - 313-408 - DATA REPORT OF GEOTECHNICAL ENGINEERING EXPLORATION; C. REPORT DATE: FEB 4, 2022; D. REFER TO PROJECT MANUAL (SECTION 31 23 23: FILL) FOR MATERIAL TESTING METHODS AND FREQUENCIES UNDER SLABS, STRUCTURES AND BEHIND WALLS.
2. PREPARE FOUNDATION SUBGRADE IN ACCORDANCE WITH THE REQUIREMENTS SPECIFIED IN SUMMARY OF GEOTECHNICAL RECOMMENDATIONS AND DESIGN PARAMETERS MEMO.
3. PREPARE SLABS AND PAVEMENT SUBGRADES IN ACCORDANCE WITH CITY OF COLUMBUS OHIO CONSTRUCTION AND MATERIAL SPECIFICATIONS (CMCSO) ITEM 204.
4. SPREAD FOOTINGS AND MAT FOUNDATIONS, ON UNDISTURBED SOIL OR WELL COMPACTED ENGINEERED FILL, HAVE BEEN DESIGNED FOR A MAXIMUM ALLOWABLE BEARING PRESSURE OF 1,500 PSF.
5. PREPARE SOILS UNDER STRUCTURES PER SUMMARY OF GEOTECHNICAL RECOMMENDATIONS AND DESIGN PARAMETERS MEMO SOILS REPORT. ALL ENGINEERED FILL IS TO CONFORM TO CMSC ITEM 304, EXCEPT NO SLAG IS PERMITTED.
6. AT RETAINING WALLS, ACTIVE SOIL PRESSURE FOR UNRESTRAINED WALLS - FOLLOW THE INFORMATION FROM THE SUMMARY OF GEOTECHNICAL RECOMMENDATIONS AND DESIGN PARAMETERS MEMO GEOTECHNICAL REPORT. ALL BACKFILL BEHIND WALLS SHALL CONFORM TO CMSC TABLE 703.01, SIZE NO. 57.
7. WALLS THAT ARE SHOWN RESTRAINED AT THE TOP SHALL NOT BE BACKFILLED UNTIL THE STRUCTURE PROVIDING RESTRAINT IS IN PLACE AND HAS ATTAINED DESIGN STRENGTH. ALL BACKFILL BEHIND WALLS SHALL CONFORM TO CMSC TABLE 703.01, SIZE NO. 57.
8. CONTRACTOR IS RESPONSIBLE FOR DESIGN AND INSTALLATION OF WALL BRACING FOR WALLS THAT ARE BACKFILLED PRIOR TO CONSTRUCTION OF TOP RESTRAINT.
9. SOIL UNIT WEIGHT 115 PCF
10. FROST DEPTH 36 INCHES
11. ANY SURFACES DISTURBED DURING CONSTRUCTION SHALL BE GRADED TO MATCH SITE GRADING DRAWINGS.
12. POSITIVE SITE DRAINAGE SHALL BE PROVIDED AT ALL TIMES SO THAT WATER IS NOT ALLOWED TO POND IN EXCAVATIONS OR NEAR FOUNDATIONS.
13. PRIOR TO PLACING CONCRETE FOR SEAL SLABS OR FOUNDATIONS, THE SUBSOIL CONDITIONS SHALL BE CHECKED BY THE GEOTECHNICAL ENGINEERS REPRESENTATIVE FOR COMPLIANCE WITH THE PROJECT GEOTECHNICAL REPORT DOCUMENTS AND SPECIFICATIONS.
14. PRIOR TO PLACEMENT OF CONCRETE, CONTRACTOR SHALL CONFIRM ALL FOUNDATION EMBED ITEMS - PIPES SLEEVES, STEEL PLATES, INSERTS, ETC. ARE IN PLACE.
15. CONTRACTOR TO ASSUME 2" OF AGGREGATE BASE WILL NEED TO BE ADDED AS PART OF SURFACE PREPARATION TO REPAIR ANY SURFACE DAMAGED BY DEMOLITION AND BROUGHT TO GRADE.

EXCAVATION:

- 1. EXCAVATION FOR FOUNDATIONS SHALL BE IN ACCORDANCE WITH THE REQUIREMENTS OF THE SUMMARY OF GEOTECHNICAL RECOMMENDATIONS AND DESIGN PARAMETERS MEMO PROJECT GEOTECHNICAL REPORT.
2. IT SHALL BE THE CONTRACTOR'S RESPONSIBILITY WHEN EXCAVATING FOR NEW FOUNDATIONS TO PROVIDE PROPER SHORING IN ACCORDANCE WITH OSHA STANDARDS UNLESS OTHERWISE SHOWN ON THE DRAWINGS.
3. BLASTING IS NOT PERMITTED.

CONCRETE

- 1. CONCRETE WORK SHALL FOLLOW THE PRACTICES AND STANDARDS SPECIFIED IN SECTION CODES AND STANDARDS.
2. CONCRETE PROPERTIES: ALL CONCRETE SHALL CONFORM TO ASTM C-94

Table with 4 columns: Concrete Use, Minimum 28 Day Compressive Strength, Slump at Placement, and Description. Includes items like 'Unless noted otherwise, all concrete shall be 4,000 PSI' and 'Addition of water to the batch for material with insufficient slump will not be permitted'.

- 3. ADDITION OF WATER TO THE BATCH FOR MATERIAL WITH INSUFFICIENT SLUMP WILL NOT BE PERMITTED, UNLESS THE SUPPLIER HAS SPECIFICALLY WITHHELD WATER FROM THE BATCH AT THE PLANT.
4. CONCRETE CONTAINING SUPERPLASTICIZING ADMIXTURE SHALL HAVE A SLUMP OF 4" +/- 1", TO BE FIELD VERIFIED, PRIOR TO ADDING ADMIXTURE, AND NOT EXCEEDING 8" AT PLACEMENT.
5. MECHANICALLY VIBRATE ALL CONCRETE WHEN PLACED, EXCEPT THAT SLABS ON GRADE NEED TO BE VIBRATED ONLY AROUND UNDER-FLOOR DUCTS, SLAB EDGES, REINFORCING, KEYS, ETC.
6. UNLESS APPROVED OTHERWISE IN WRITING BY THE ENGINEER OF RECORD, ALL CONCRETE SLABS ON GRADE SHALL BE BOUND BY CONSTRUCTION JOINTS, KEYS OR SAW CUT, SUCH THAT THE ENCLOSED AREA DOES NOT EXCEED 250 SQUARE FEET.
7. WHERE SPECIFIED, VERTICAL CONCRETE SURFACES ARE TO BE FORMED.
8. ALL EXPOSED CONCRETE CORNERS (BOTH VERTICAL & HORIZONTAL) SHALL HAVE A 3/4" CHAMFER OR ROUNDED TOLED EDGE.
9. BONDING COMPOUND TO BE 'SIKADUR H-MOD' AS MANUFACTURED BY SIKA CORP. OR OWNER APPROVED EQUAL TO ADHERE NEW CONCRETE TO EXISTING CONCRETE HAVING ITS INITIAL SET APPLICATION TO BE PER THE MANUFACTURER'S WRITTEN INSTRUCTIONS.
10. BOND BREAKER TO BE 15 LB ASPHALT SATURATED FELT IN ACCORDANCE WITH ASTM D226, OR APPROVED EQUIVALENT.
11. VAPOR RETARDER SHALL BE POLYETHYLENE FILM CONFORMING TO ASTM D2103.
12. THE REQUIREMENTS OF MECHANICAL, ELECTRICAL AND PLUMBING FOR EMBEDDED ITEMS INCLUDING PIPE, CONDUIT, EMBEDDED STEEL AND BOLTS ARE TO BE CHECKED PRIOR TO EACH CONCRETE POUR.
13. SLAB-ON-GRADE CONSTRUCTION JOINTS (CJ) AND SAWED CONTROL JOINTS (SCJ) SHALL BE PLACED AS SHOWN.
14. ALL EXTERIOR CONCRETE SHALL HAVE AIR ENTRAINMENT OF 5 +/- 1.5%.
15. CONCRETE KEYS AT CONSTRUCTION JOINTS SHALL BE NOMINAL 2"x4".
16. UNLESS NOTED OTHERWISE, PROVIDE (2) #4 BARS ON ALL SIDES OF OPENINGS IN CONCRETE WALLS AND FLOORS.
17. CONCRETE INSTALLATION CONTRACTOR SHALL PROVIDE A PLAN WITH THE MINIMUM NUMBER OF CONSTRUCTION JOINTS AS RESTRICTED BY POUR LIMITATIONS.
18. FOR ANCHOR ROD INFORMATION SEE THE ANCHOR ROD SCHEDULE.

STEEL REINFORCING:

- 1. TYPICAL REINFORCING BAR STRENGTHS: A. REINFORCING (NON-WELDABLE): ASTM A615, DEFORMED Fy= 60 KSI; B. REINFORCING (WELDABLE): ASTM A706, DEFORMED Fy= 60 KSI; C. WELDED WIRE FABRIC: ASTM A1064 Fy = 75 KSI
2. CONCRETE COVER FOR REINFORCEMENT SHALL CONFORM TO THE REQUIREMENTS OF ACI 318 UNLESS OTHERWISE NOTED.
3. LATEST ACI CODE AND DETAILING MANUAL APPLY. SECURELY TIE ALL BARS IN LOCATION BEFORE PLACING CONCRETE.
4. ALL REINFORCING TO BE WELDED SHALL BE WELDED IN ACCORDANCE WITH AWS D1.4.
5. REINFORCING LAP SPLICES IN CONCRETE SHALL BE PER TYPICAL DETAILS UNLESS NOTED OTHERWISE.
6. REINFORCING BARS SHALL NOT BE BENT OR STRAIGHTENED IN A MANNER THAT WILL INJURE THE MATERIAL.
7. ALL SPICES NOT DETAILED ON DESIGN DRAWINGS SHALL BE TAKEN AS TENSION LAP SPLICES.
8. LAP SPLICES FOR ADJACENT BARS SHALL BE STAGGERED.
9. PROVIDE DOVELS IN FOUNDATIONS THE SAME SIZE AND SPACING AS VERTICAL WALL.
10. DETAILING, FABRICATION AND PLACING OF REINFORCING STEEL SHALL CONFORM TO THE 'ACI DETAILING MANUAL', SP-66.
11. WELDED WIRE REINFORCING (WWR) SHALL CONFORM TO ASTM A1064 AND BE THE SIZE NOTED.
12. DETAILING, FABRICATION AND PLACING OF REINFORCING STEEL SHALL CONFORM TO THE 'ACI DETAILING MANUAL', SP-66.
13. WWR SHALL BE FLAT SHEETS AND NOT FROM A ROLLED BUNDLE.
14. LAP SPLICE LENGTHS FOR DEFORMED BARS SHALL BE ACI 318 CLASS B TENSION LAP SPLICES UNLESS OTHERWISE NOTED ON DESIGN DRAWINGS.
15. DIMENSIONS GIVEN FOR BENT OR HOOKED BARS ARE OUT TO OUT.
16. PROVIDE TWO DIAGONAL BARS IN TOP FACE OF ALL REINTRANT CORNERS IN SLABS.
17. ALL REINFORCING BARS AT REINTRANT CORNERS SHALL EXTEND FOR THE FULL BAR DEVELOPMENT LENGTH PAST THE CORNERS UNLESS NOTED.

WATERSTOPS:

- 1. WATERSTOPS SHALL BE 6" POLYVINYL CHLORIDE (PVC) WITHOUT CENTER BULB, TYPE DB-2, AS MANUFACTURED BY HORN/DURAJOINT OR ENGINEER APPROVED EQUIVALENT.
2. WATERSTOPS IN COLD JOINTS SHALL BE VOLCLAY WATERSTOP RX-101 AS MANUFACTURED BY CETCO, OR ENGINEER APPROVED EQUIVALENT.

EXPANSION AND ISOLATION JOINTS:

- 1. EXPANSION JOINT MATERIAL SHALL BE PREMOULDED, NONEXTRUDING TYPE, 'CERAMAR' BY W.R. MEADOWS, OR ENGINEER APPROVED EQUIVALENT, AND SHALL CONFORM TO ASTM D1751 OR ASTM D1752.
2. SEAL EXPANSION JOINTS WITH 'SOF-SEAL' LOW MODULUS HORIZONTAL SEALANT AS MANUFACTURED BY W.R. MEADOWS OR ENGINEER APPROVED EQUIVALENT AND INSTALLED IN STRICT ACCORDANCE WITH MANUFACTURER'S SPECIFICATIONS.

JOINT SEALANTS:

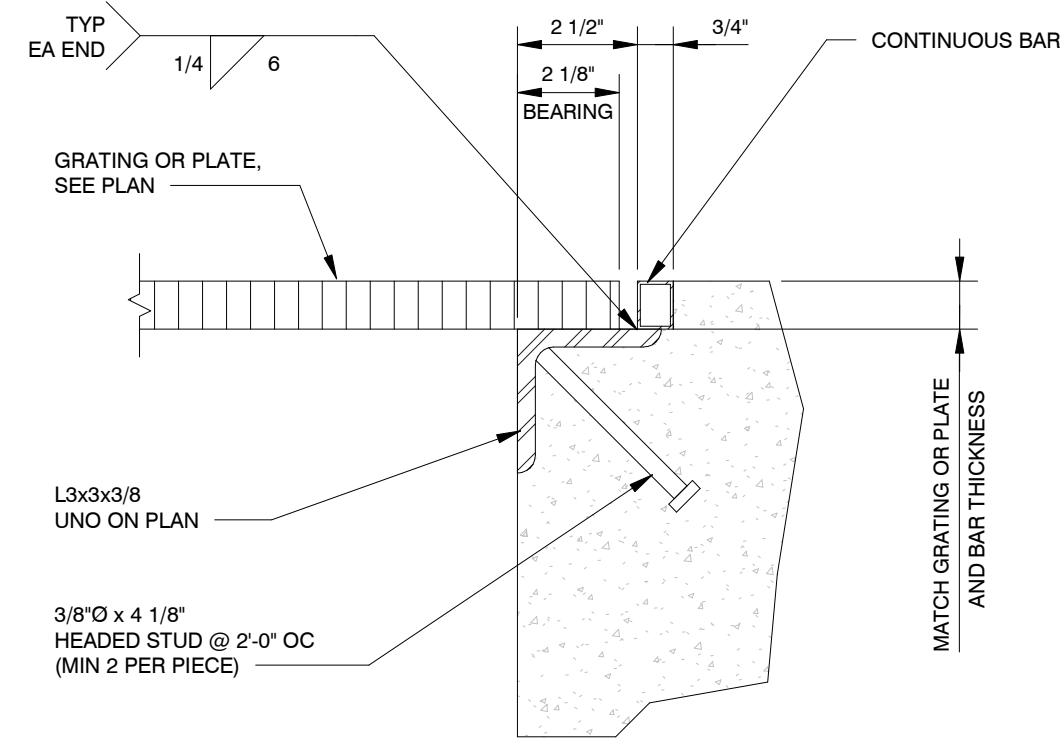
- 1. FOR NORMAL CONDITIONS, USE ONE COMPONENT, GUN GRADE, POLYURETHANE TYPE 'SIKAFLEX 1A' BY SIKA CHEMICAL CORPORATION OR ENGINEER APPROVED EQUIVALENT.
2. WHERE CONSTANT WET CONDITIONS EXIST, USE SIKAFLEX-2C NS/SL 2-COMPONENT SEALANT WITH BACKER ROD, BY SIKA CHEMICAL CORPORATION OR ENGINEER APPROVED EQUIVALENT BEFORE APPLYING SEALANT.

ANCHOR RODS AND EMBEDDED STEEL:

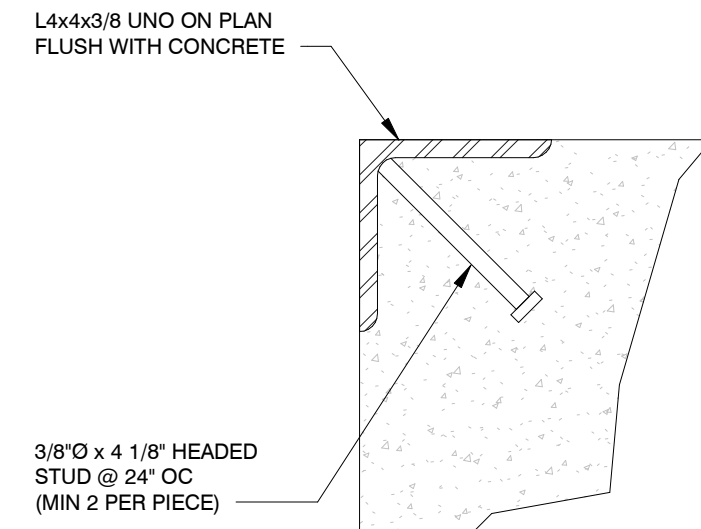
- 1. ALL REFERENCE TO HEADED STUDS SHALL INDICATE AUTOMATIC WELDED HIGH STRENGTH HEADED STUDS (NELSON OR EQUAL).
2. ALL STEEL ITEMS EMBEDDED IN CONCRETE INCLUDING ANCHOR RODS SHALL BE PLAIN UNLESS NOTED OTHERWISE ON DESIGN DRAWINGS.
3. COLUMN ANCHOR BOLT HOLES SHALL BE OVERSIZED IN ACCORDANCE WITH AISC TABLE 14.2.
4. ANCHOR BOLTS SHALL BE PRE-TENSIONED TO THE VALUES GIVEN ON THE DESIGN DRAWINGS WHERE SHOWN, OTHERWISE TIGHTEN TO SNUG-TIGHT CONDITION AS DEFINED BY AISC.

POST-INSTALLED ANCHORS AND REBAR:

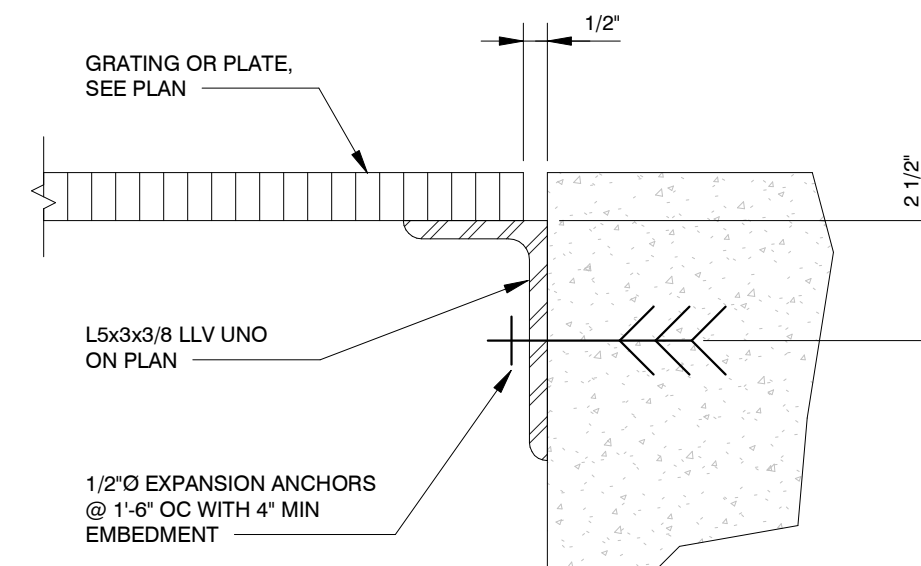
- 1. POST-INSTALLED ANCHORS SYSTEMS SHALL COMPLY WITH THE LATEST REVISION OF ICC-ES ACCEPTANCE CRITERIA AND HAVE A VALID ICC-ES REPORT IN ACCORDANCE WITH THE APPLICABLE BUILDING CODE.
2. ADHESIVE ANCHORS AND POST INSTALLED REBAR IN CONCRETE SHALL BE: a. HILTI HIT-RE-500-V3 ADHESIVE ANCHOR (ICC-ES REPORT ESR-3814); b. HILTI KWIK BOLT T22 CARBON AND STAINLESS STEEL ANCHORS (ICC-ES REPORT ESR-4266); c. HILTI HIT-RE-500-V3 ADHESIVE ANCHOR (ICC-ES REPORT ESR-3814); d. HILTI KWIK BOLT T22 CARBON AND STAINLESS STEEL ANCHORS (ICC-ES REPORT ESR-4266); e. HILTI HIT-RE-500-V3 ADHESIVE ANCHOR (ICC-ES REPORT ESR-3814); f. HILTI KWIK BOLT T22 CARBON AND STAINLESS STEEL ANCHORS (ICC-ES REPORT ESR-4266); g. HILTI HIT-RE-500-V3 ADHESIVE ANCHOR (ICC-ES REPORT ESR-3814); h. HILTI KWIK BOLT T22 CARBON AND STAINLESS STEEL ANCHORS (ICC-ES REPORT ESR-4266); i. HILTI KWIK BOLT T22 CARBON AND STAINLESS STEEL ANCHORS (ICC-ES REPORT ESR-4266); j. HILTI KWIK BOLT T22 CARBON AND STAINLESS STEEL ANCHORS (ICC-ES REPORT ESR-4266); k. HILTI KWIK BOLT T22 CARBON AND STAINLESS STEEL ANCHORS (ICC-ES REPORT ESR-4266); l. HILTI KWIK BOLT T22 CARBON AND STAINLESS STEEL ANCHORS (ICC-ES REPORT ESR-4266); m. HILTI KWIK BOLT T22 CARBON AND STAINLESS STEEL ANCHORS (ICC-ES REPORT ESR-4266); n. HILTI KWIK BOLT T22 CARBON AND STAINLESS STEEL ANCHORS (ICC-ES REPORT ESR-4266); o. HILTI KWIK BOLT T22 CARBON AND STAINLESS STEEL ANCHORS (ICC-ES REPORT ESR-4266); p. HILTI KWIK BOLT T22 CARBON AND STAINLESS STEEL ANCHORS (ICC-ES REPORT ESR-4266); q. HILTI KWIK BOLT T22 CARBON AND STAINLESS STEEL ANCHORS (ICC-ES REPORT ESR-4266); r. HILTI KWIK BOLT T22 CARBON AND STAINLESS STEEL ANCHORS (ICC-ES REPORT ESR-4266); s. HILTI KWIK BOLT T22 CARBON AND STAINLESS STEEL ANCHORS (ICC-ES REPORT ESR-4266); t. HILTI KWIK BOLT T22 CARBON AND STAINLESS STEEL ANCHORS (ICC-ES REPORT ESR-4266); u. HILTI KWIK BOLT T22 CARBON AND STAINLESS STEEL ANCHORS (ICC-ES REPORT ESR-4266); v. HILTI KWIK BOLT T22 CARBON AND STAINLESS STEEL ANCHORS (ICC-ES REPORT ESR-4266); w. HILTI KWIK BOLT T22 CARBON AND STAINLESS STEEL ANCHORS (ICC-ES REPORT ESR-4266); x. HILTI KWIK BOLT T22 CARBON AND STAINLESS STEEL ANCHORS (ICC-ES REPORT ESR-4266); y. HILTI KWIK BOLT T22 CARBON AND STAINLESS STEEL ANCHORS (ICC-ES REPORT ESR-4266); z. HILTI KWIK BOLT T22 CARBON AND STAINLESS STEEL ANCHORS (ICC-ES REPORT ESR-4266); aa. HILTI KWIK BOLT T22 CARBON AND STAINLESS STEEL ANCHORS (ICC-ES REPORT ESR-4266); ab. HILTI KWIK BOLT T22 CARBON AND STAINLESS STEEL ANCHORS (ICC-ES REPORT ESR-4266); ac. HILTI KWIK BOLT T22 CARBON AND STAINLESS STEEL ANCHORS (ICC-ES REPORT ESR-4266); ad. HILTI KWIK BOLT T22 CARBON AND STAINLESS STEEL ANCHORS (ICC-ES REPORT ESR-4266); ae. HILTI KWIK BOLT T22 CARBON AND STAINLESS STEEL ANCHORS (ICC-ES REPORT ESR-4266); af. HILTI KWIK BOLT T22 CARBON AND STAINLESS STEEL ANCHORS (ICC-ES REPORT ESR-4266); ag. HILTI KWIK BOLT T22 CARBON AND STAINLESS STEEL ANCHORS (ICC-ES REPORT ESR-4266); ah. HILTI KWIK BOLT T22 CARBON AND STAINLESS STEEL ANCHORS (ICC-ES REPORT ESR-4266); ai. HILTI KWIK BOLT T22 CARBON AND STAINLESS STEEL ANCHORS (ICC-ES REPORT ESR-4266); aj. HILTI KWIK BOLT T22 CARBON AND STAINLESS STEEL ANCHORS (ICC-ES REPORT ESR-4266); ak. HILTI KWIK BOLT T22 CARBON AND STAINLESS STEEL ANCHORS (ICC-ES REPORT ESR-4266); al. HILTI KWIK BOLT T22 CARBON AND STAINLESS STEEL ANCHORS (ICC-ES REPORT ESR-4266); am. HILTI KWIK BOLT T22 CARBON AND STAINLESS STEEL ANCHORS (ICC-ES REPORT ESR-4266); an. HILTI KWIK BOLT T22 CARBON AND STAINLESS STEEL ANCHORS (ICC-ES REPORT ESR-4266); ao. HILTI KWIK BOLT T22 CARBON AND STAINLESS STEEL ANCHORS (ICC-ES REPORT ESR-4266); ap. HILTI KWIK BOLT T22 CARBON AND STAINLESS STEEL ANCHORS (ICC-ES REPORT ESR-4266); aq. HILTI KWIK BOLT T22 CARBON AND STAINLESS STEEL ANCHORS (ICC-ES REPORT ESR-4266); ar. HILTI KWIK BOLT T22 CARBON AND STAINLESS STEEL ANCHORS (ICC-ES REPORT ESR-4266); as. HILTI KWIK BOLT T22 CARBON AND STAINLESS STEEL ANCHORS (ICC-ES REPORT ESR-4266); at. HILTI KWIK BOLT T22 CARBON AND STAINLESS STEEL ANCHORS (ICC-ES REPORT ESR-4266); au. HILTI KWIK BOLT T22 CARBON AND STAINLESS STEEL ANCHORS (ICC-ES REPORT ESR-4266); av. HILTI KWIK BOLT T22 CARBON AND STAINLESS STEEL ANCHORS (ICC-ES REPORT ESR-4266); aw. HILTI KWIK BOLT T22 CARBON AND STAINLESS STEEL ANCHORS (ICC-ES REPORT ESR-4266); ax. HILTI KWIK BOLT T22 CARBON AND STAINLESS STEEL ANCHORS (ICC-ES REPORT ESR-4266); ay. HILTI KWIK BOLT T22 CARBON AND STAINLESS STEEL ANCHORS (ICC-ES REPORT ESR-4266); az. HILTI KWIK BOLT T22 CARBON AND STAINLESS STEEL ANCHORS (ICC-ES REPORT ESR-4266); ba. HILTI KWIK BOLT T22 CARBON AND STAINLESS STEEL ANCHORS (ICC-ES REPORT ESR-4266); bb. HILTI KWIK BOLT T22 CARBON AND STAINLESS STEEL ANCHORS (ICC-ES REPORT ESR-4266); bc. HILTI KWIK BOLT T22 CARBON AND STAINLESS STEEL ANCHORS (ICC-ES REPORT ESR-4266); bd. HILTI KWIK BOLT T22 CARBON AND STAINLESS STEEL ANCHORS (ICC-ES REPORT ESR-4266); be. HILTI KWIK BOLT T22 CARBON AND STAINLESS STEEL ANCHORS (ICC-ES REPORT ESR-4266); bf. HILTI KWIK BOLT T22 CARBON AND STAINLESS STEEL ANCHORS (ICC-ES REPORT ESR-4266); bg. HILTI KWIK BOLT T22 CARBON AND STAINLESS STEEL ANCHORS (ICC-ES REPORT ESR-4266); bh. HILTI KWIK BOLT T22 CARBON AND STAINLESS STEEL ANCHORS (ICC-ES REPORT ESR-4266); bi. HILTI KWIK BOLT T22 CARBON AND STAINLESS STEEL ANCHORS (ICC-ES REPORT ESR-4266); bj. HILTI KWIK BOLT T22 CARBON AND STAINLESS STEEL ANCHORS (ICC-ES REPORT ESR-4266); bk. HILTI KWIK BOLT T22 CARBON AND STAINLESS STEEL ANCHORS (ICC-ES REPORT ESR-4266); bl. HILTI KWIK BOLT T22 CARBON AND STAINLESS STEEL ANCHORS (ICC-ES REPORT ESR-4266); bm. HILTI KWIK BOLT T22 CARBON AND STAINLESS STEEL ANCHORS (ICC-ES REPORT ESR-4266); bn. HILTI KWIK BOLT T22 CARBON AND STAINLESS STEEL ANCHORS (ICC-ES REPORT ESR-4266); bo. HILTI KWIK BOLT T22 CARBON AND STAINLESS STEEL ANCHORS (ICC-ES REPORT ESR-4266); bp. HILTI KWIK BOLT T22 CARBON AND STAINLESS STEEL ANCHORS (ICC-ES REPORT ESR-4266); bq. HILTI KWIK BOLT T22 CARBON AND STAINLESS STEEL ANCHORS (ICC-ES REPORT ESR-4266); br. HILTI KWIK BOLT T22 CARBON AND STAINLESS STEEL ANCHORS (ICC-ES REPORT ESR-4266); bs. HILTI KWIK BOLT T22 CARBON AND STAINLESS STEEL ANCHORS (ICC-ES REPORT ESR-4266); bt. HILTI KWIK BOLT T22 CARBON AND STAINLESS STEEL ANCHORS (ICC-ES REPORT ESR-4266); bu. HILTI KWIK BOLT T22 CARBON AND STAINLESS STEEL ANCHORS (ICC-ES REPORT ESR-4266); bv. HILTI KWIK BOLT T22 CARBON AND STAINLESS STEEL ANCHORS (ICC-ES REPORT ESR-4266); bw. HILTI KWIK BOLT T22 CARBON AND STAINLESS STEEL ANCHORS (ICC-ES REPORT ESR-4266); bx. HILTI KWIK BOLT T22 CARBON AND STAINLESS STEEL ANCHORS (ICC-ES REPORT ESR-4266); by. HILTI KWIK BOLT T22 CARBON AND STAINLESS STEEL ANCHORS (ICC-ES REPORT ESR-4266); bz. HILTI KWIK BOLT T22 CARBON AND STAINLESS STEEL ANCHORS (ICC-ES REPORT ESR-4266); ca. HILTI KWIK BOLT T22 CARBON AND STAINLESS STEEL ANCHORS (ICC-ES REPORT ESR-4266); cb. HILTI KWIK BOLT T22 CARBON AND STAINLESS STEEL ANCHORS (ICC-ES REPORT ESR-4266); cc. HILTI KWIK BOLT T22 CARBON AND STAINLESS STEEL ANCHORS (ICC-ES REPORT ESR-4266); cd. HILTI KWIK BOLT T22 CARBON AND STAINLESS STEEL ANCHORS (ICC-ES REPORT ESR-4266); ce. HILTI KWIK BOLT T22 CARBON AND STAINLESS STEEL ANCHORS (ICC-ES REPORT ESR-4266); cf. HILTI KWIK BOLT T22 CARBON AND STAINLESS STEEL ANCHORS (ICC-ES REPORT ESR-4266); cg. HILTI KWIK BOLT T22 CARBON AND STAINLESS STEEL ANCHORS (ICC-ES REPORT ESR-4266); ch. HILTI KWIK BOLT T22 CARBON AND STAINLESS STEEL ANCHORS (ICC-ES REPORT ESR-4266); ci. HILTI KWIK BOLT T22 CARBON AND STAINLESS STEEL ANCHORS (ICC-ES REPORT ESR-4266); cj. HILTI KWIK BOLT T22 CARBON AND STAINLESS STEEL ANCHORS (ICC-ES REPORT ESR-4266); ck. HILTI KWIK BOLT T22 CARBON AND STAINLESS STEEL ANCHORS (ICC-ES REPORT ESR-4266); cl. HILTI KWIK BOLT T22 CARBON AND STAINLESS STEEL ANCHORS (ICC-ES REPORT ESR-4266); cm. HILTI KWIK BOLT T22 CARBON AND STAINLESS STEEL ANCHORS (ICC-ES REPORT ESR-4266); cn. HILTI KWIK BOLT T22 CARBON AND STAINLESS STEEL ANCHORS (ICC-ES REPORT ESR-4266); co. HILTI KWIK BOLT T22 CARBON AND STAINLESS STEEL ANCHORS (ICC-ES REPORT ESR-4266); cp. HILTI KWIK BOLT T22 CARBON AND STAINLESS STEEL ANCHORS (ICC-ES REPORT ESR-4266); cq. HILTI KWIK BOLT T22 CARBON AND STAINLESS STEEL ANCHORS (ICC-ES REPORT ESR-4266); cr. HILTI KWIK BOLT T22 CARBON AND STAINLESS STEEL ANCHORS (ICC-ES REPORT ESR-4266); cs. HILTI KWIK BOLT T22 CARBON AND STAINLESS STEEL ANCHORS (ICC-ES REPORT ESR-4266); ct. HILTI KWIK BOLT T22 CARBON AND STAINLESS STEEL ANCHORS (ICC-ES REPORT ESR-4266); cu. HILTI KWIK BOLT T22 CARBON AND STAINLESS STEEL ANCHORS (ICC-ES REPORT ESR-4266); cv. HILTI KWIK BOLT T22 CARBON AND STAINLESS STEEL ANCHORS (ICC-ES REPORT ESR-4266); cw. HILTI KWIK BOLT T22 CARBON AND STAINLESS STEEL ANCHORS (ICC-ES REPORT ESR-4266); cx. HILTI KWIK BOLT T22 CARBON AND STAINLESS STEEL ANCHORS (ICC-ES REPORT ESR-4266); cy. HILTI KWIK BOLT T22 CARBON AND STAINLESS STEEL ANCHORS (ICC-ES REPORT ESR-4266); cz. HILTI KWIK BOLT T22 CARBON AND STAINLESS STEEL ANCHORS (ICC-ES REPORT ESR-4266); da. HILTI KWIK BOLT T22 CARBON AND STAINLESS STEEL ANCHORS (ICC-ES REPORT ESR-4266); db. HILTI KWIK BOLT T22 CARBON AND STAINLESS STEEL ANCHORS (ICC-ES REPORT ESR-4266); dc. HILTI KWIK BOLT T22 CARBON AND STAINLESS STEEL ANCHORS (ICC-ES REPORT ESR-4266); dd. HILTI KWIK BOLT T22 CARBON AND STAINLESS STEEL ANCHORS (ICC-ES REPORT ESR-4266); de. HILTI KWIK BOLT T22 CARBON AND STAINLESS STEEL ANCHORS (ICC-ES REPORT ESR-4266); df. HILTI KWIK BOLT T22 CARBON AND STAINLESS STEEL ANCHORS (ICC-ES REPORT ESR-4266); dg. HILTI KWIK BOLT T22 CARBON AND STAINLESS STEEL ANCHORS (ICC-ES REPORT ESR-4266); dh. HILTI KWIK BOLT T22 CARBON AND STAINLESS STEEL ANCHORS (ICC-ES REPORT ESR-4266); di. HILTI KWIK BOLT T22 CARBON AND STAINLESS STEEL ANCHORS (ICC-ES REPORT ESR-4266); dj. HILTI KWIK BOLT T22 CARBON AND STAINLESS STEEL ANCHORS (ICC-ES REPORT ESR-4266); dk. HILTI KWIK BOLT T22 CARBON AND STAINLESS STEEL ANCHORS (ICC-ES REPORT ESR-4266); dl. HILTI KWIK BOLT T22 CARBON AND STAINLESS STEEL ANCHORS (ICC-ES REPORT ESR-4266); dm. HILTI KWIK BOLT T22 CARBON AND STAINLESS STEEL ANCHORS (ICC-ES REPORT ESR-4266); dn. HILTI KWIK BOLT T22 CARBON AND STAINLESS STEEL ANCHORS (ICC-ES REPORT ESR-4266); do. HILTI KWIK BOLT T22 CARBON AND STAINLESS STEEL ANCHORS (ICC-ES REPORT ESR-4266); dp. HILTI KWIK BOLT T22 CARBON AND STAINLESS STEEL ANCHORS (ICC-ES REPORT ESR-4266); dq. HILTI KWIK BOLT T22 CARBON AND STAINLESS STEEL ANCHORS (ICC-ES REPORT ESR-4266); dr. HILTI KWIK BOLT T22 CARBON AND STAINLESS STEEL ANCHORS (ICC-ES REPORT ESR-4266); ds. HILTI KWIK BOLT T22 CARBON AND STAINLESS STEEL ANCHORS (ICC-ES REPORT ESR-4266); dt. HILTI KWIK BOLT T22 CARBON AND STAINLESS STEEL ANCHORS (ICC-ES REPORT ESR-4266); du. HILTI KWIK BOLT T22 CARBON AND STAINLESS STEEL ANCHORS (ICC-ES REPORT ESR-4266); dv. HILTI KWIK BOLT T22 CARBON AND STAINLESS STEEL ANCHORS (ICC-ES REPORT ESR-4266); dw. HILTI KWIK BOLT T22 CARBON AND STAINLESS STEEL ANCHORS (ICC-ES REPORT ESR-4266); dx. HILTI KWIK BOLT T22 CARBON AND STAINLESS STEEL ANCHORS (ICC-ES REPORT ESR-4266); dy. HILTI KWIK BOLT T22 CARBON AND STAINLESS STEEL ANCHORS (ICC-ES REPORT ESR-4266); dz. HILTI KWIK BOLT T22 CARBON AND STAINLESS STEEL ANCHORS (ICC-ES REPORT ESR-4266); ea. HILTI KWIK BOLT T22 CARBON AND STAINLESS STEEL ANCHORS (ICC-ES REPORT ESR-4266); eb. HILTI KWIK BOLT T22 CARBON AND STAINLESS STEEL ANCHORS (ICC-ES REPORT ESR-4266); ec. HILTI KWIK BOLT T22 CARBON AND STAINLESS STEEL ANCHORS (ICC-ES REPORT ESR-4266); ed. HILTI KWIK BOLT T22 CARBON AND STAINLESS STEEL ANCHORS (ICC-ES REPORT ESR-4266); ee. HILTI KWIK BOLT T22 CARBON AND STAINLESS STEEL ANCHORS (ICC-ES REPORT ESR-4266); ef. HILTI KWIK BOLT T22 CARBON AND STAINLESS STEEL ANCHORS (ICC-ES REPORT ESR-4266); eg. HILTI KWIK BOLT T22 CARBON AND STAINLESS STEEL ANCHORS (ICC-ES REPORT ESR-4266); eh. HILTI KWIK BOLT T22 CARBON AND STAINLESS STEEL ANCHORS (ICC-ES REPORT ESR-4266); ei. HILTI KWIK BOLT T22 CARBON AND STAINLESS STEEL ANCHORS (ICC-ES REPORT ESR-4266); ej. HILTI KWIK BOLT T22 CARBON AND STAINLESS STEEL ANCHORS (ICC-ES REPORT ESR-4266); ek. HILTI KWIK BOLT T22 CARBON AND STAINLESS STEEL ANCHORS (ICC-ES REPORT ESR-4266); el. HILTI KWIK BOLT T22 CARBON AND STAINLESS STEEL ANCHORS (ICC-ES REPORT ESR-4266); em. HILTI KWIK BOLT T22 CARBON AND STAINLESS STEEL ANCHORS (ICC-ES REPORT ESR-4266); en. HILTI KWIK BOLT T22 CARBON AND STAINLESS STEEL ANCHORS (ICC-ES REPORT ESR-4266); eo. HILTI KWIK BOLT T22 CARBON AND STAINLESS STEEL ANCHORS (ICC-ES REPORT ESR-4266); ep. HILTI KWIK BOLT T22 CARBON AND STAINLESS STEEL ANCHORS (ICC-ES REPORT ESR-4266); eq. HILTI KWIK BOLT T22 CARBON AND STAINLESS STEEL ANCHORS (ICC-ES REPORT ESR-4266); er. HILTI KWIK BOLT T22 CARBON AND STAINLESS STEEL ANCHORS (ICC-ES REPORT ESR-4266); es. HILTI KWIK BOLT T22 CARBON AND STAINLESS STEEL ANCHORS (ICC-ES REPORT ESR-4266); et. HILTI KWIK BOLT T22 CARBON AND STAINLESS STEEL ANCHORS (ICC-ES REPORT ESR-4266); eu. HILTI KWIK BOLT T22 CARBON AND STAINLESS STEEL ANCHORS (ICC-ES REPORT ESR-4266); ev. HILTI KWIK BOLT T22 CARBON AND STAINLESS STEEL ANCHORS (ICC-ES REPORT ESR-4266); ew. HILTI KWIK BOLT T22 CARBON AND STAINLESS STEEL ANCHORS (ICC-ES REPORT ESR-4266); ex. HILTI KWIK BOLT T22 CARBON AND STAINLESS STEEL ANCHORS (ICC-ES REPORT ESR-4266); ey. HILTI KWIK BOLT T22 CARBON AND STAINLESS STEEL ANCHORS (ICC-ES REPORT ESR-4266); ez. HILTI KWIK BOLT T22 CARBON AND STAINLESS STEEL ANCHORS (ICC-ES REPORT ESR-4266); fa. HILTI KWIK BOLT T22 CARBON AND STAINLESS STEEL ANCHORS (ICC-ES REPORT ESR-4266); fb. HILTI KWIK BOLT T22 CARBON AND STAINLESS STEEL ANCHORS (ICC-ES REPORT ESR-4266); fc. HILTI KWIK BOLT T22 CARBON AND STAINLESS STEEL ANCHORS (ICC-ES REPORT ESR-4266); fd. HILTI KWIK BOLT T22 CARBON AND STAINLESS STEEL ANCHORS (ICC-ES REPORT ESR-4266); fe. HILTI KWIK BOLT T22 CARBON AND STAINLESS STEEL ANCHORS (ICC-ES REPORT ESR-4266); ff. HILTI KWIK BOLT T22 CARBON AND STAINLESS STEEL ANCHORS (ICC-ES REPORT ESR-4266); fg. HILTI KWIK BOLT T22 CARBON AND STAINLESS STEEL ANCHORS (ICC-ES REPORT ESR-4266); fh. HILTI KWIK BOLT T22 CARBON AND STAINLESS STEEL ANCHORS (ICC-ES REPORT ESR-4266); fi. HILTI KWIK BOLT T22 CARBON AND STAINLESS STEEL ANCHORS (ICC-ES REPORT ESR-4266); fj. HILTI KWIK BOLT T22 CARBON AND STAINLESS STEEL ANCHORS (ICC-ES REPORT ESR-4266); fk. HILTI KWIK BOLT T22 CARBON AND STAINLESS STEEL ANCHORS (ICC-ES REPORT ESR-4266); fl. HILTI KWIK BOLT T22 CARBON AND STAINLESS STEEL ANCHORS (ICC-ES REPORT ESR-4266); fm. HILTI KWIK BOLT T22 CARBON AND STAINLESS STEEL ANCHORS (ICC-ES REPORT ESR-4266); fn. HILTI KWIK BOLT T22 CARBON AND STAINLESS STEEL ANCHORS (ICC-ES REPORT ESR-4266); fo. HILTI KWIK BOLT T22 CARBON AND STAINLESS STEEL ANCHORS (ICC-ES REPORT ESR-4266); fp. HILTI KWIK BOLT T22 CARBON AND STAINLESS STEEL ANCHORS (ICC-ES REPORT ESR-4266); fq. HILTI KWIK BOLT T22 CARBON AND STAINLESS STEEL ANCHORS (ICC-ES REPORT ESR-4266); fr. HILTI KWIK BOLT T22 CARBON AND STAINLESS STEEL ANCHORS (ICC-ES REPORT ESR-4266); fs. HILTI KWIK BOLT T22 CARBON AND STAINLESS STEEL ANCHORS (ICC-ES REPORT ESR-4266); ft. HILTI KWIK BOLT T22 CARBON AND STAINLESS STEEL ANCHORS (ICC-ES REPORT ESR-4266); fu. HILTI KWIK BOLT T22 CARBON AND STAINLESS STEEL ANCHORS (ICC-ES REPORT ESR-4266); fv. HILTI KWIK BOLT T22 CARBON AND STAINLESS STEEL ANCHORS (ICC-ES REPORT ESR-4266); fw. HILTI KWIK BOLT T22 CARBON AND STAINLESS STEEL ANCHORS (ICC-ES REPORT ESR-4266); fx. HILTI KWIK BOLT T22 CARBON AND STAINLESS STEEL ANCHORS (ICC-ES REPORT ESR-4266); fy. HILTI KWIK BOLT T22 CARBON AND STAINLESS STEEL ANCHORS (ICC-ES REPORT ESR-4266); fz. HILTI KWIK BOLT T22 CARBON AND STAINLESS STEEL ANCHORS (ICC-ES REPORT ESR-4266); ga. HILTI KWIK BOLT T22 CARBON AND STAINLESS STEEL ANCHORS (ICC-ES REPORT ESR-4266); gb. HILTI KWIK BOLT T22 CARBON AND STAINLESS STEEL ANCHORS (ICC-ES REPORT ESR-4266); gc. HILTI KWIK BOLT T22 CARBON AND STAINLESS STEEL ANCHORS (ICC-ES REPORT ESR-4266); gd. HILTI KWIK BOLT T22 CARBON AND STAINLESS STEEL ANCHORS (ICC-ES REPORT ESR-4266); ge. HILTI KWIK BOLT T22 CARBON AND STAINLESS STEEL ANCHORS (ICC-ES REPORT ESR-4266); gf. HILTI KWIK BOLT T22 CARBON AND STAINLESS STEEL ANCHORS (ICC-ES REPORT ESR-4266); gh. HILTI KWIK BOLT T22 CARBON AND STAINLESS STEEL ANCHORS (ICC-ES REPORT ESR-4266); gi. HILTI KWIK BOLT T22 CARBON AND STAINLESS STEEL ANCHORS (ICC-ES REPORT ESR-4266); gj. HILTI KWIK BOLT T22 CARBON AND STAINLESS STEEL ANCHORS (ICC-ES REPORT ESR-4266); gk. HILTI KWIK BOLT T22 CARBON AND STAINLESS STEEL ANCHORS (ICC-ES REPORT ESR-4266); gl. HILTI KWIK BOLT T22 CARBON AND STAINLESS STEEL ANCHORS (ICC-ES REPORT ESR-4266); gm. HILTI KWIK BOLT T22 CARBON AND STAINLESS STEEL ANCHORS (ICC-ES REPORT ESR-4266); gn. HILTI KWIK BOLT T22 CARBON AND STAINLESS STEEL ANCHORS (ICC-ES REPORT ESR-4266); go. HILTI KWIK BOLT T22 CARBON AND STAINLESS STEEL ANCHORS (ICC-ES REPORT ESR-4266); gp. HILTI KWIK BOLT T22 CARBON AND STAINLESS STEEL ANCHORS (ICC-ES REPORT ESR-4266); gq. HILTI KWIK BOLT T22 CARBON AND STAINLESS STEEL ANCHORS (ICC-ES REPORT ESR-4266); gr. HILTI KWIK BOLT T22 CARBON AND STAINLESS STEEL ANCHORS (ICC-ES REPORT ESR-4266); gs. HILTI KWIK BOLT T22 CARBON AND STAINLESS STEEL ANCHORS (ICC-ES REPORT ESR-4266); gt. HILTI KWIK BOLT T22 CARBON AND STAINLESS STEEL ANCHORS (ICC-ES REPORT ESR-4266); gu. HILTI KWIK BOLT T22 CARBON AND STAINLESS STEEL ANCHORS (ICC-ES REPORT ESR-4266); gv. HILTI KWIK BOLT T22 CARBON AND STAINLESS STEEL ANCHORS (ICC-ES REPORT ESR-4266); gw. HILTI KWIK BOLT T22 CARBON AND STAINLESS STEEL ANCHORS (ICC-ES REPORT ESR-4266); gx. HILTI KWIK BOLT T22 CARBON AND STAINLESS STEEL ANCHORS (ICC-ES REPORT ESR-4266); gy. HILTI KWIK BOLT T22 CARBON AND STAINLESS STEEL ANCHORS (ICC-ES REPORT ESR-4266); gz. HILTI KWIK



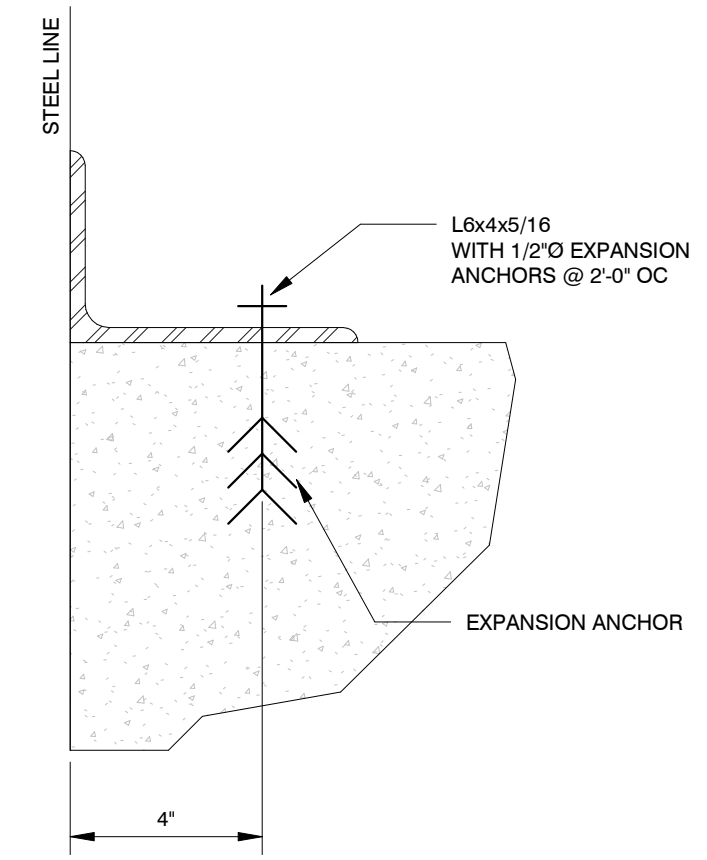
RC01 CURB ANGLE DETAIL
NTS



RC02 PROTECTION ANGLE DETAIL
NTS



RC03 LEDGE ANGLE DETAIL
NTS



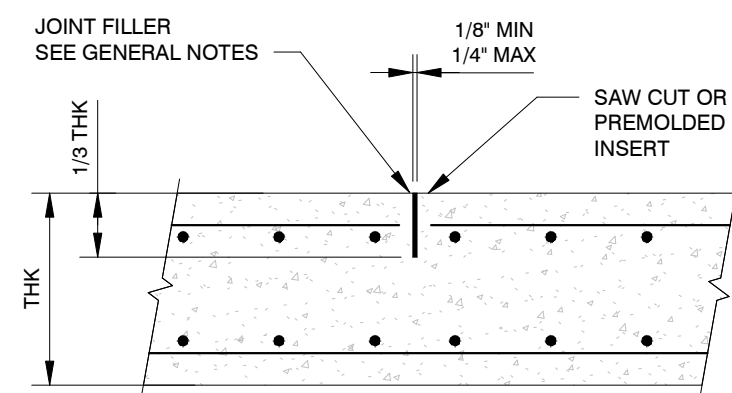
RC04 ANGLE DETAIL
NTS

DETAIL REMOVED

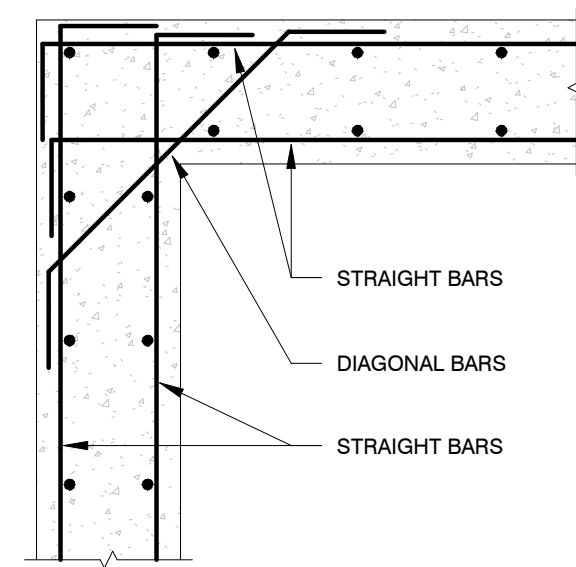
DETAIL REMOVED

DETAIL REMOVED

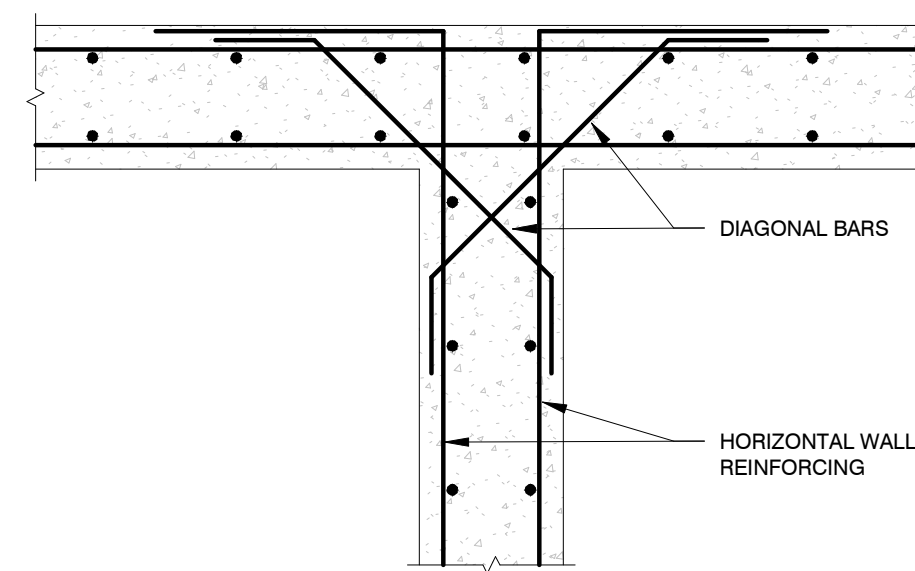
DETAIL REMOVED



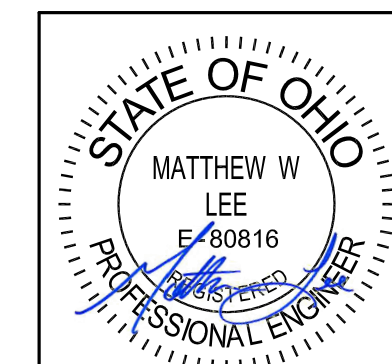
RC09 FLOOR SLAB CONTROL JOINT
NTS



RC10 CORNER WALL REINFORCING DETAIL
NTS



RC11 INTERSECTING WALL REINFORCING DETAIL
NTS



REVISION RECORD	
NO	DESCRIPTION
0	ISSUED FOR CONSTRUCTION
1	REMOVED DETAILS

Civil & Environmental Consultants, Inc.
250 W. Old Wilson Bridge Road • Suite 250 • Worthington, OH 43085
614-540-6633 • 888-596-6808
www.ccecinc.com

SOLID WASTE AUTHORITY OF CENTRAL OHIO
MORSE ROAD TRANSFER STATION
4260 MORSE ROAD
CITY OF COLUMBUS, OHIO 43230

STRUCTURAL GENERAL CONCRETE DETAILS	
DATE:	JAN 2022
DRAWN BY:	B. BEHANNA
CHECKED BY:	M. LEE
PROJECT NO.:	313-408
APPROVED BY:	R. SUSALLA

DRAWING NO. **ST00-0003**
SHEET 46 OF 88

BID SHEET

To the Solid Waste Authority of Central Ohio (“SWACO”), Franklin County, Ohio, to provide the Project as outlined in this RFB and in accordance with the specifications provided; therefore, **EACH BIDDER MUST TAKE NOTICE OF THE FACT THAT EVEN THOUGH ITS BID MAY BE ACCEPTED AND THE DOCUMENTS SIGNED BY THE BIDDER TO WHOM AN AWARD IS MADE AND BY SWACO, THAT NO SUCH AWARD OR SIGNING BY SWACO SHALL BE CONSIDERED A BINDING CONTRACT WITHOUT THE PROPER CERTIFICATE BY THE FISCAL OFFICER OF SWACO INDICATING THAT FUNDS ARE AVAILABLE TO COVER THE COST OF THE WORK TO BE DONE, OR WITHOUT THE APPROVAL OF THE LEGAL COUNSEL OF SWACO AS TO THE FORM OF THE CONTRACT AND ALL THE PERTINENT DOCUMENTS RELATING THERETO HAVING BEEN APPROVED BY SAID LEGAL COUNSEL OF SWACO AND SUCH BIDDER IS HEREBY CHARGED WITH THIS NOTICE.**

The signer of the Bid, as Bidder, also declares that the only person, persons, company or parties interested in this Bid are named in this Bid, that he/she has carefully examined the advertisement, instructions to Bidders, General Conditions, sample contract documents, and all other documents related to this Bid as listed in the “Table of Contents” section of the Request for Bid package; that the Bidder or his/her representative has made such investigation as is necessary to determine the character and extent of the purchase and he/she proposes and agrees that if this Bid be accepted he/she will contract with SWACO to perform all necessary procedures in order to execute SWACO’s purchase within the time period set forth and according to the requirements of SWACO herein and hereinafter set forth for the following prices:

THE BIDDER’S LUMP SUM TOTALS BELOW ARE ITS TOTAL BIDS BASED ON UNIT PRICES. THESE FIGURES ARE FOR INFORMATION ONLY AT THE TIME OF OPENING BIDS. SWACO WILL MAKE THE TABULATION FROM THE UNIT PRICES. IF THERE IS AN ERROR IN THE LUMP SUM TOTAL BY THE BIDDER, IT SHALL BE CHANGED AS ONLY THE LUMP SUM PRICES SHALL GOVERN.

BID SHEET (CONTINUED)

This Bid is to provide the Project according to the information provided in the Request for Bid documents.

Company Name _____

Bid Tab

PAY ITEM	DESCRIPTION	ESTIMATED QUANTITY	UNIT	TOTAL
1	General Requirements and General Conditions	1	LS	
2	Remove & Replace Concrete Paving	1	LS	
3	Remove Fuel Island & Underground Tanks	1	LS	
4	Demolish Tipping Floor	1	LS	
5	Install Tipping Floor ▪ Construction of Conveyor Pit	1	LS	
6	Underground Utilities ▪ Install Underground Detention and Sanitary Sewer ▪ Install Storm Sewer	1	LS	
7	Building Improvements West Building Expansion ▪ Remove and Replace West Canopy ▪ Partial West Wall Demolition ▪ Fire Suppression ▪ Concrete Push Wall	1	LS	
8	Electrical Installation	1	LS	
9	Clean Out Detention Pond	1	LS	
Subtotal (Pay Items 1 – 9)				
10	Compactor & Conveyor Installation Allowance	1	Allowance	\$100,00
TOTAL BID AMOUNT (Pay Items 1 – 10)				

[Write out the Total Bid Amount below]

Submitted this _____ day of _____, 20____.

By: _____
Authorized Signature

Bidder's Representative

Contact Person for this Bid _____

Title _____

E-mail Address _____

Company Name _____

Mailing Address _____

City, State, Zip _____

Phone Number _____ Fax Number _____

Mobile Number _____

Attach additional paperwork if necessary.

If Bidder is:

An Individual

By: _____
(Individual's signature)

(Printed or typed name of individual)

Doing business as: _____

License or Registration Number: _____

Business Address: _____

Phone No. _____ Fax No.: _____

~~~~~

**A Partnership**

By: \_\_\_\_\_  
(Firm name)

\_\_\_\_\_  
(General partner's signature)

\_\_\_\_\_  
(Printed or typed name of general partner) (Attach evidence of authority to sign.)

License or Registration Number: \_\_\_\_\_

Business Address: \_\_\_\_\_

Phone No. \_\_\_\_\_ Fax No.: \_\_\_\_\_

~~~~~

A Corporation

By: _____
(Corporation name)

(State of incorporation)

By: _____
(Signature of officer authorized to sign)

(Printed or typed name and title of officer authorized to sign. Attach evidence of authority to sign.)

(CORPORATE SEAL)

Attest: _____
(Secretary)

License or Registration Number: _____

Business Address: _____

Phone No. _____ Fax No.: _____

~~~~~

**Limited Liability Company**

By: \_\_\_\_\_  
(Firm name)

\_\_\_\_\_  
(State of formation)

By: \_\_\_\_\_  
(Signature of member authorized to sign)

\_\_\_\_\_  
(Printed /typed name and title of authorized member. Attach evidence of authority to sign.)

License or Registration Number: \_\_\_\_\_

Business Address: \_\_\_\_\_

Phone No. \_\_\_\_\_ Fax No.: \_\_\_\_\_

~~~~~

A Joint Venture

Joint Venture Name: _____

By: _____
(Signature)

(Printed or Typed Name) (Title)

By: _____
(Signature)

(Printed or Typed Name) (Title)

(Address)

Phone and fax number and address for receipt of communications to joint venture:

(Each joint venturer must sign. The manner of signing for each individual, partnership, corporation or limited liability company that is a party to the joint venture shall be in the manner indicated above).

++ END OF BID FORM ++